

THE BEDFORD

ELEVATION I, VINYL

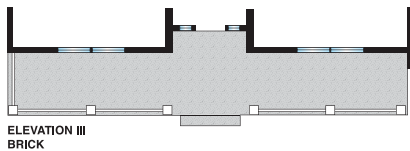
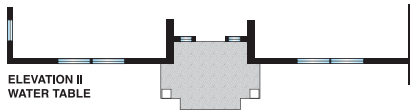
3,295 Sq. Ft. • 4 Beds • 2 1/2 Baths • 2-Car Garage



FIRST FLOOR



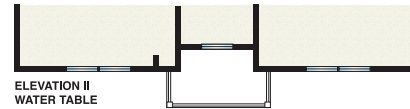
FIRST FLOOR
ELEVATION I
VINYL



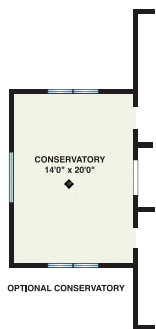
SECOND FLOOR



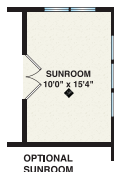
SECOND FLOOR
ELEVATION I
VINYL



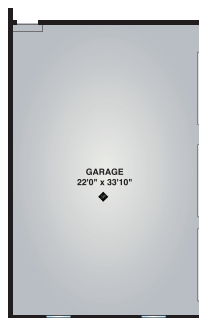
PARAMOUNT POSSIBILITIES (NOT TO SCALE)



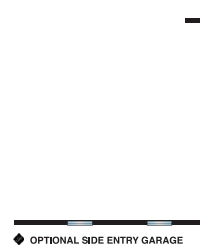
OPTIONAL CONSERVATORY



OPTIONAL
SUNROOM



OPTIONAL 3 CAR GARAGE



OPTIONAL SIDE ENTRY GARAGE



OPTIONAL OWNERS BATH

This home design is available at:
Whispering Meadows, Whispering
Grove, and Rolling Meadows.



Ask About Our Additional Paramount Possibilities.
This symbol represents the imaginative design features available to personalize your home.
Please consult a Paramount Sales Associate for "Paramount Possibilities" options.



All dimensions are approximate and subject to field variation. Some floor plan configurations vary slightly on each floor. Elevations shown are artist's conceptual renderings. Actual shape of tray ceilings may vary from drawing. Some floor plans and windows may vary slightly with alternate elevations.